



Preventive
Conservation
in Historic Houses
and Palace
Museums:
Assessment
Methodologies
and Applications

SilvanaEditoriale

Preventive Conservation in Historic Houses and Palace Museums: Assessment Methodologies and Applications

Conference of the National Museum of the Palace of Versailles (EPV), the Association of European Royal Residences (ARRE), and the Research Centre of the Palace of Versailles (CRCV)

In collaboration with the International Committee for Historic House Museums (DEMHIST), held at the National Museum of the Palace of Versailles and Trianon

From 29th November to 1st December 2017

Conference Proceedings

Under the scientific direction of
Danilo Forleo
*in charge of preventive conservation
and head of EPICO programme,
National Museum of the Palace
of Versailles and Trianon*

Editorial coordination
Nadia Francaviglia
*research assistant for EPICO programme,
Research Centre of the Palace of Versailles*

Translations
Clarisse Le Mercier, Camila Mora

This book brings together the presentations of the speakers at the international symposium organised as part of the EPICO (European Protocol in Preventive Conservation) research programme, by the National Museum of the Palace of Versailles:

Catherine Pegard, *president*
Laurent Salomé, *director of the National Museum of the Palace of Versailles*
Tierry Gausseron, *deputy head*
Association of European Royal Residences (ARRE)
Research Centre of the Palace of Versailles (CRCV)

With the participation of

Ministère de la Culture,
ICOM – DEMHIST (International Committee for Historic House Museums)

Scientific committee

Lorenzo Appolonia, *president, Italian Group of the International Institute for Conservation – IGIIC*
Florence Bertin, *head of Collection Department at MAD – Musée des Arts décoratifs*
Michel Dubus, *ICOM-CC group coordinator for preventive conservation, Centre de recherche et de restauration des musées de France – C2RMF*
Danilo Forleo, *in charge of preventive conservation and head of EPICO programme, National Museum of the Palace of Versailles and Trianon*
Nadia Francaviglia, *research assistant for EPICO programme, Research Centre of the Palace of Versailles*
Agnieszka Laudy, *deputy head of Architecture Department, Museum of King Jan III's Palace at Wilanów (Warsaw)*
Bertrand Lavedrine, *director, Centre de recherche sur la conservation des collections – CNRS*
Sarah Staniforth, *former president, International Institute for Conservation – IIC*

Organizing committee

Elena Alliaudi, *coordinator, Association of European Royal Residences*
Hélène Legrand, *assistant coordinator, Association of European Royal Residences*
Matilde-Maria Cassandro-Malphettes, *secretary general, Research Centre of the Palace of Versailles Bernard Ancer, in charge of general affairs, Research Centre of the Palace of Versailles*
Olivia Lombardi, *executive assistant, Research Centre of the Palace of Versailles*
Serena Gavazzi, *head of the Patronage Department, National Museum of the Palace of Versailles and Trianon*
Noémie Wansart, *research assistant at Curatorial Department, National Museum of the Palace of Versailles and Trianon*

Thanks to

Lorenzo Appolonia, Lionel Arzac, Jean-Vincent Bacquart, Wojciech Bagiński, Jérémie Benoît, Marie-Alice Beziaud, Céline Boissiere, Anne Carasso, Élisabeth Caude, Gabrielle Chadie, Thibault Creste, Stefania De Blasi, Elisabetta Brignoli, Hélène Dalifard, Gaël de Guichen, Ariane de Lestrangle, Festese Devarayar, Françoise Feige, Christophe Fouin, Éric Gall, Thomas Garnier, Roberta Genta, Denis Guillemard, Michelle-Agnoko Gunn, l'équipe du Grand Café d'Orléans, Pierre-Xavier Hans, Nicole Jamieson, Thierry Lamouroux, Marie Leimbacher, Nadège Marzanato, Béatrice Messaoudi, Stefan Michalski, Christian Milet, Marya Nawrocka-Teodorczyk, Marco Nervo, Lucie Nicolas-Vullierme, Clotilde Nouailhat, Agnieszka Pawlak, Amaury Percheron, Arnaud Prêtre, Gérard Robaut, Bertrand Rondot, Valériane Rozé, Béatrice Sarrazin, Béatrix Saule, Didier Saulnier, Emma Scheinmaenn, Violaine Solari, Emilie Sonck, Pauline Tronca, Rémi Watiez, Thierry Webley, Sébastien Zimmerman



With the patronage of



Portuguese Presidential Palace's Structural Weaknesses Survey

Abstract

The Palace of Belem was a Lord's Country House, started to be built in the 16th century, mainly built in the 17th century and with a lot of additions and changes until the 20th century. In 1726 the Portuguese King John V bought the House and it became a Royal small palace until 1910. After the Republican Revolution, the palace became the Presidential Palace of Portugal.

Being the Head of State's Office, the palace is a political centre, and a place of representation of the State, receiving representative guests from all over the World.

Because of its old construction, stability was designed by ancient methods. In 1755 Lisbon had a huge earthquake and most of the buildings afterwards were built using a new anti-seismic system. Belem was not affected by this earthquake, but the building was built before these concerns.

On the Presidency's demand, the National Laboratory of Civil Engineering (LNEC) made in May 2014 a structural weaknesses survey in order to identify possible damageable areas in case of an earthquake.

This survey aims to assess the risk and give the right information to the preventive structural reinforcements, which will have to be done in the respect of the Heritage Conservation principles.

Keywords

Presidential Palace, structural survey, risk assessment, reinforcements.

Pedro Nunes de Brito Serra Vaz

General Secretary of the
Presidency of the Republic,
National Palace of Belem
pedrovaz@presidencia.pt

Bárbara Lhansol da Costa Massapina Vaz

Faculty of Architecture,
University of Lisbon,
Polo Universitário da Ajuda
blvaz@fa.ulisboa.pt

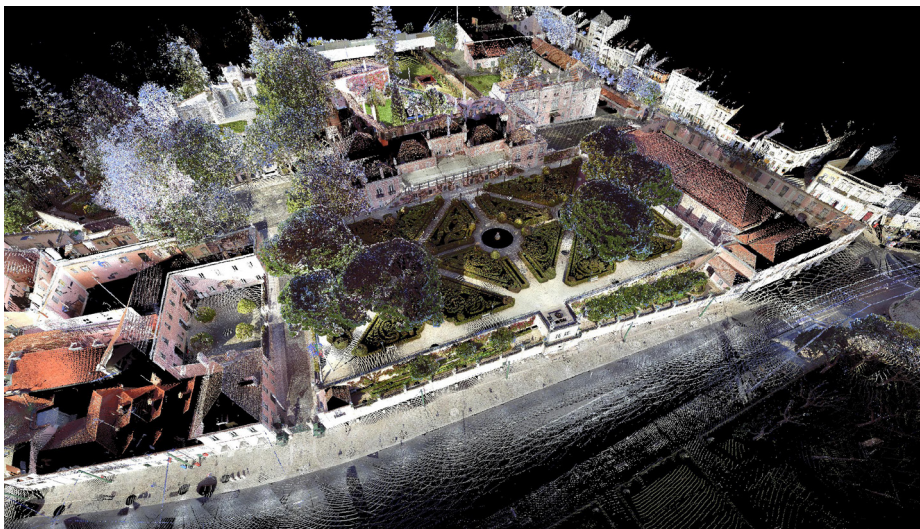


Fig. 1
Point Clouds: 3D
laser scan and digital
photogrammetry (381.5
M points), ArcHC_3D
Research Group, FA, Univ.
Lisbon.

Context of the Building

Being the President's official office, the palace has been for more than a century a political centre, a place for ceremonies for the representation of the State, receiving major political guests from all over the world. Because there is the Presidency's Museum inside, the compound receives public every day, especially on weekends, when all the major ceremonial rooms are open to public visits.

Regarding all this context, stability and structural security is vital for the preservation of the cultural asset and as part of the global security of the users and guests.

But because of its old construction, stability was designed by ancient methods and techniques, using traditional materials. In 1755 Lisbon suffered a huge earthquake, estimated to have been a level 9 earthquake in Richter Scale. Due to the collapse of almost all the buildings in town centre, all the new buildings afterwards were built using a new anti-seismic system, called "gaiola pombalina," a type of wooden 3D grid named after the Prime Minister of the time, the Marquis of Pombal.

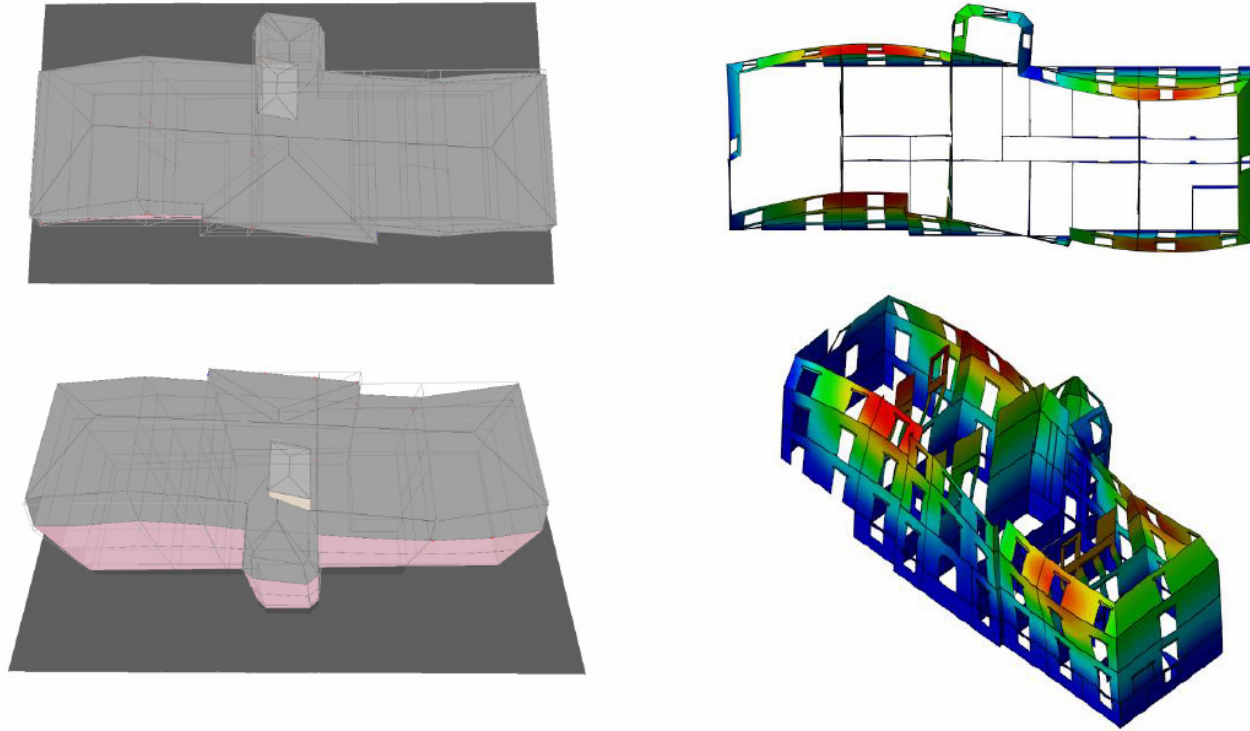
The Survey

On the Presidency's demand, the National Laboratory of Civil Engineering (LNEC) made in 2014 a structural weaknesses survey to identify possible damageable areas in case of an earthquake. A virtual 3D vector model was made to assess seismic stability. Some vulnerabilities were then identified and needed further analyses.

A 3D scan made in 2011 (fig. 1) was used to manipulate the entire complex as if it was a model, allowing to see it from several different perspectives, including 2D elevations and finding problems that were invisible from the ground. Some distortions found in the exterior walls of the main rooms were noticed at the time and became under surveillance. After 7 years, another 3D scan was done to the same problematic areas to monitor its evolution.

After the final LNEC report, a formal procurement within experts of this construction system from Portuguese Engineering Universities was made to design the structural reinforcements. The work was commissioned to the "Lest," The Structure's Laboratory of the Minho University.

Before starting to define reinforcement solutions, a very much detailed survey was made by a Research Team of Minho University to identify the strength, the modulation, the conservation state, the joints and the sanity of each piece in order to get the perfect characterisation and definition of every component. Moderately destructive tests like flat-jacks (simple at first and then double) and cores (wall samples) were made, as well as non-destructive tests like resistograph tests, sonic and radar tests, thermographic camera pictures, humidity measures,



etc. The cores were taken to the Minho University Laboratory and compressed until collapse, in order to know its resistance. This information, with all the other data from the survey was photographed, listed and then gathered into a 3D model, virtually shaken to estimate the structural behaviour of the buildings in the case of an earthquake (fig. 2).

Conclusion

Culturally relevant assets built in seismic areas such as the Portuguese Presidential Palace example need special attention to its stability and physical integrity. Estimated structural behaviour needs study in order to assure that minimum conditions of safety, both for the preservation of the cultural asset and for the people inside, will prevail in an event of an earthquake.

Fig. 2
Experimental results and mode shapes from modal analysis, Inst. Sustainability Innovation in Structural Engineering, University of Minho.

Bibliography

P. LOURENÇO (coord.), *Palácio de Belém, Levantamento Estrutural e caracterização de Materiais*, R.2016-DEC/E-28, ISISE, U. Minho.

P. VAZ, *Conservação do Património e Funções de Estado*, PhD Thesis, Faculty Architecture, University of Lisbon, 2016.



Silvana Editoriale

Direction

Dario Cimorelli

Art Director

Giacomo Merli

Editorial Coordinator

Sergio Di Stefano

Copy Editor

Clia Menici

Layout

Letizia Abbate

Production Coordinator

Antonio Micelli

Editorial Assistant

Ondina Granato

Photo Editors

Alessandra Olivari, Silvia Sala

Press Office

Lidia Masolini, press@silvanaeditoriale.it

All reproduction and translation rights reserved for all countries.

© 2019 Silvana Editoriale S.p.A.,

Cinisello Balsamo, Milan

© 2019 Musée national des châteaux de Versailles et de Trianon

Under copyright and civil law this volume cannot be reproduced, wholly or in part, in any form, original or derived, or by any means: print, electronic, digital, mechanical, including photocopy, microfilm, film or any other medium, without permission in writing from the publisher.

Silvana Editoriale S.p.A.
via dei Lavoratori, 78
20092 Cinisello Balsamo, Milan
tel. 02 453 951 01
fax 02 453 951 51
www.silvanaeditoriale.it

Cover

© EPV Thomas Garnier